

1994 Texas Accessibility Standards  
Technical Memorandum

Texas Department of Licensing and Regulation  
Architectural Barriers

Issue Date: January 25, 2000

TM 00-02

Water Closets – Clear Floor Space  
4.16.2

Scoping and Application  
4.1

As presented in TAS, Fig. 28 of 4.16 can be misleading. For the purposes of clarification in this technical memorandum, the illustrations below will be referred to as (a), (b) and (c) and Fig. 28 should be considered as shown below. (Dotted lines do not represent walls)

Fig. 28 (c) represents the minimum clear floor spaces required for all water closets not located within toilet stalls. (60-inch wide clear floor space min. is required for all water closets.) Fig 28 (a) and (b) represent the minimum clear floor spaces required for water closets when a lavatory is provided on the same wet-wall adjacent to it and the clear floor space depth required for frontal and side approaches. (Graphics only show half of a lavatory, to it's center-line.)

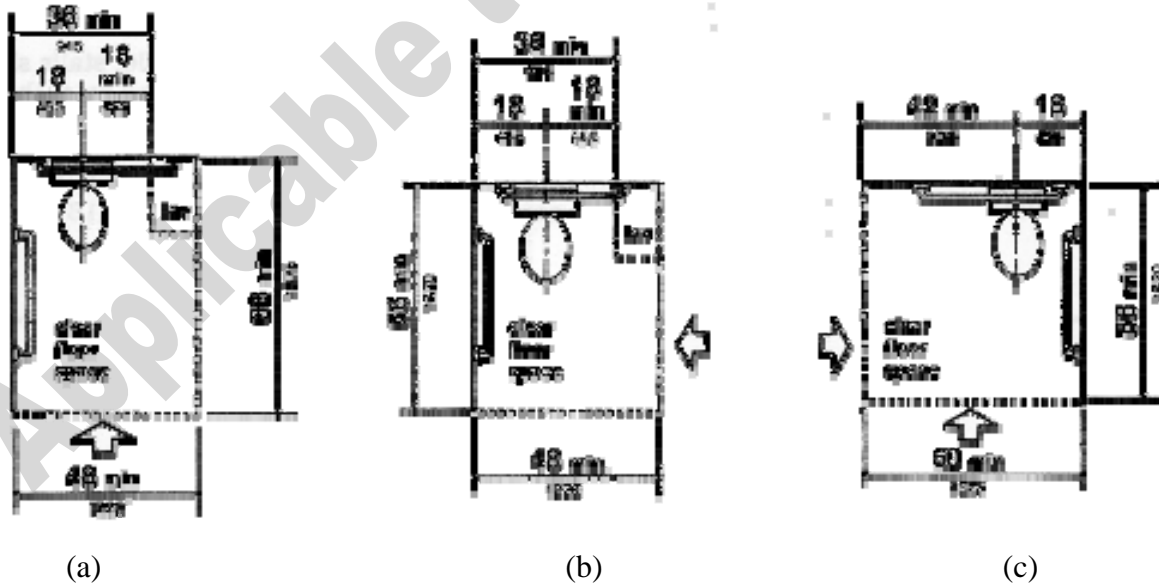


Fig. 28  
Clear Floor Space at  
Water Closets